



# **Desktop POS Printer**

## **Bluetooth Connection Manual**

Rev.1.4

**Table of Contents**

1. MANUAL INFORMATION..... 1

2. PRECAUTIONS..... 1

3. BT INFORMATION ON SELF-TEST PAGE..... 1

4. GENERAL SEQUENCE FOR BLUETOOTH CONNECTIONS..... 2

5. BLUETOOTH CONNECTION INSTRUCTIONS..... 3

    5.1 Bluetooth - Utility Tool..... 3

    5.2 Bluetooth - Windows Driver..... 13

    5.3 Bluetooth - App..... 19

## 1. Manual Information

This Bluetooth Connection Manual provides information on the connection of Bluetooth enabled devices (PDAs, PCs, etc.) with the printer.

We maintain ongoing efforts to enhance and upgrade the functions and quality of all our products. In following, product specifications and/or user manual content may be changed without prior notice.

## 2. Precautions

2-1 To connect the printer with another device via Bluetooth, the devices must be within 10m of one another. The connection may be broken if the distance between devices exceeds 10m.

2-2 The maximum separating distance may be shortened if transmission obstacles, such as cement walls, are present.

## 3. BT Information on Self-Test Page

Following information is an example from the self-test page of a printer:

Information on self-test page	Remark
<b>BT Version:</b> 35e_r1589	I435e indicates the BT module. R1589 indicates the version of BT program.
<b>BT Name:</b> BT Printer	"BT Printer" will be shown in your main devices when it is connected successfully with the printer via Bluetooth.
<b>Simple Pairing:</b> Enable	<ul style="list-style-type: none"> <li>This can be set in utility tool, refer to the detail on page 18 of this manual.</li> <li>When enable the "simple pairing", the password is unnecessary for the BT connection between host device and printer; When disable the "simple pairing", the password which could be obtained from the self-test page should be input for the BT connection.</li> </ul>
<b>BT Password:</b> NONE	
<b>BT Svcmask:</b> 1010	Indicates the BT service number. (Currently applicable only to TP808/TP809/TP80AB/TP582W)
<b>Applet Wechat:</b> Enable	Applet Wechat can be used. (Currently applicable only to TP808/TP809/TP80AB/TP582W)
<b>BT Multiconn:</b> Enable	The printer can be connected with multiple main devices at the same time via Bluetooth (7 devices with Android system and 1 device with IOS system can be connected with the printer via BT at the same time.) (Currently applicable only to TP808/TP809/TP80AB/TP582W)
<b>BluetoothID:</b> 00:15:83:B9:3C:0D	When there are more than one printers with BT function available for connection, you can identify the printer that needs to be connected by checking the Bluetooth ID.

## **4. General Sequence for Bluetooth Connections**

Bluetooth connection methods vary by device. The following is the general sequence for Bluetooth connections, provided for reference purposes.

4-1 Turn on power of each device

- PDAs, PCs (Bluetooth Dongle), Printers, etc.

4-2 Run a Bluetooth connection program on the PDA or PC.

4-3 Search for the peripheral with which to establish the connection.

- Search for the printer.

4-4 Register this Printer from the search results.

- If a security setting is enabled, register after entering the PIN Code.

(PIN Code=Pass Key: password of the Bluetooth device, Default code: 0000)

- You can check the Bluetooth pairing password through self-inspection by printed page view.

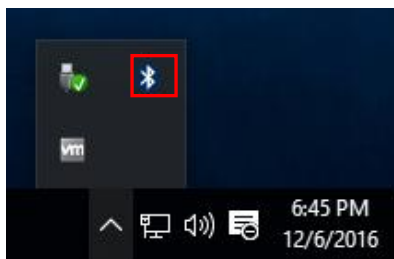
(Refer to the user's manual for more detail)

## 5. Bluetooth Connection Instructions

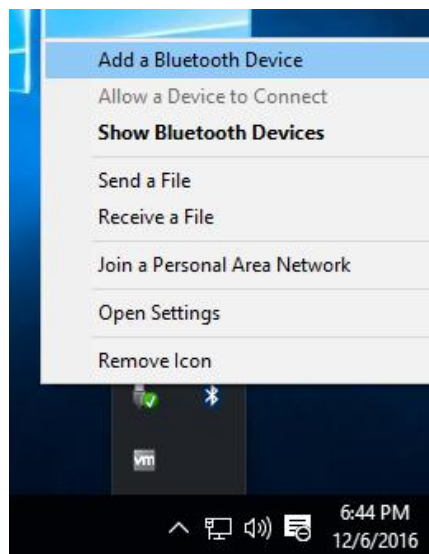
Following screen-shots are under Windows 7. There will be slight difference under other operation systems.

### 5.1 Bluetooth - Utility Tool

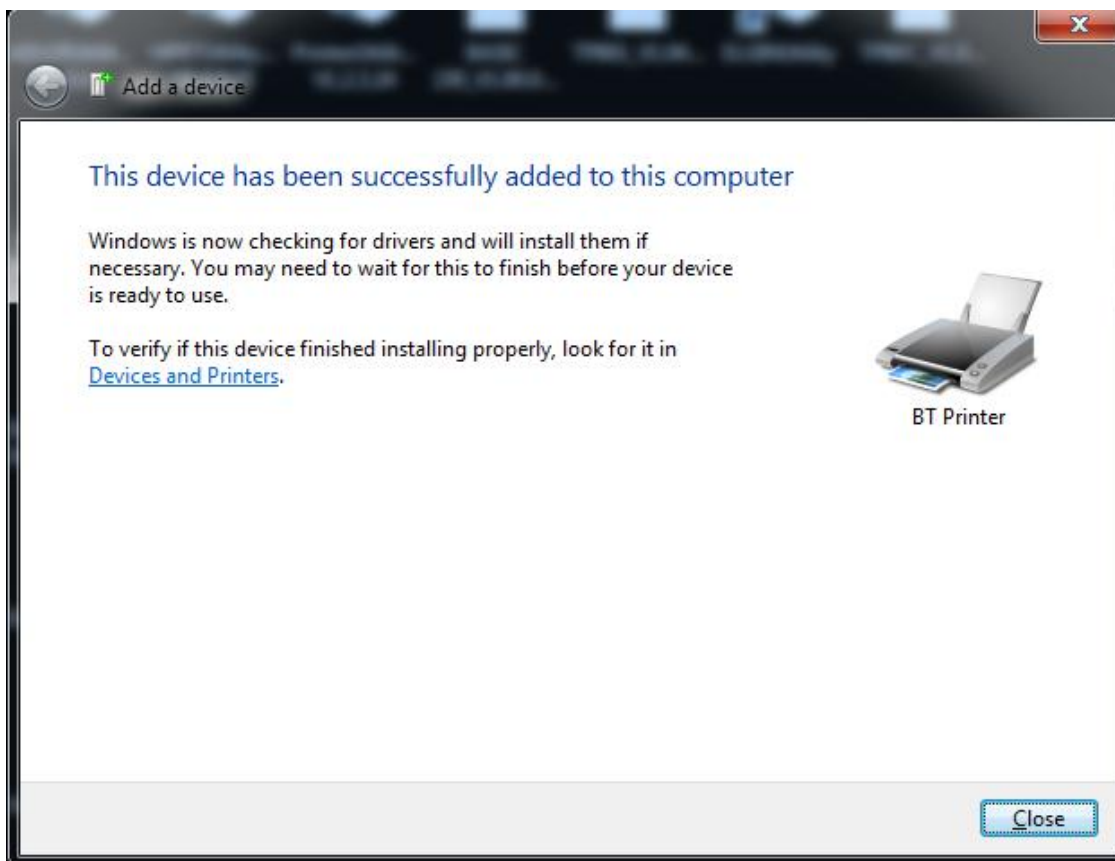
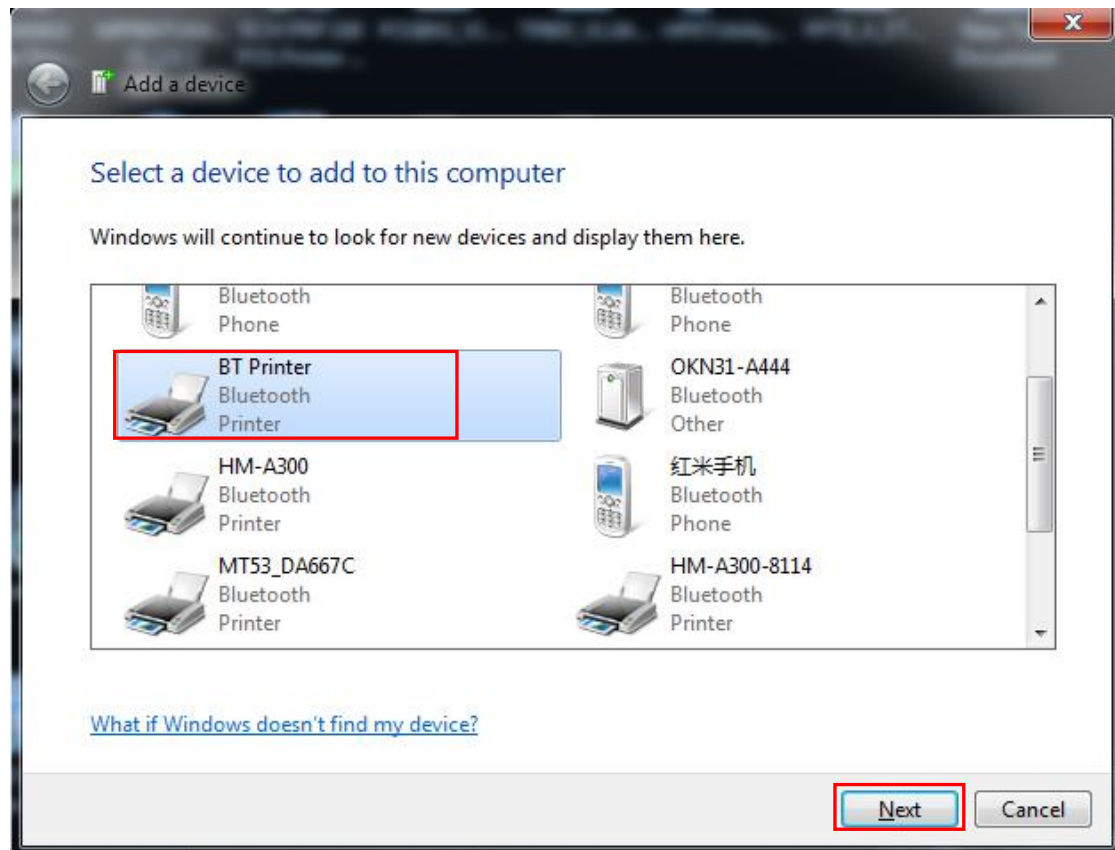
1. Turn on the printer.
2. Turn on the main device and turn on the Bluetooth function. The Bluetooth icon will show at the lower right of the screen. (If the main device is not configured with Bluetooth function, you need to insert a Bluetooth Dongle into its USB connector.)



3. Right click the icon, choose "Add a Bluetooth Device".




4. Choose “BT Printer”, and click “next”, the BT Printer is added to the main device.



Note: if the printer has a password enter the password for pairing. (The password can be obtained from the self-test page of printer)

Enter the passcode for your printer

### Enter the passcode for your printer

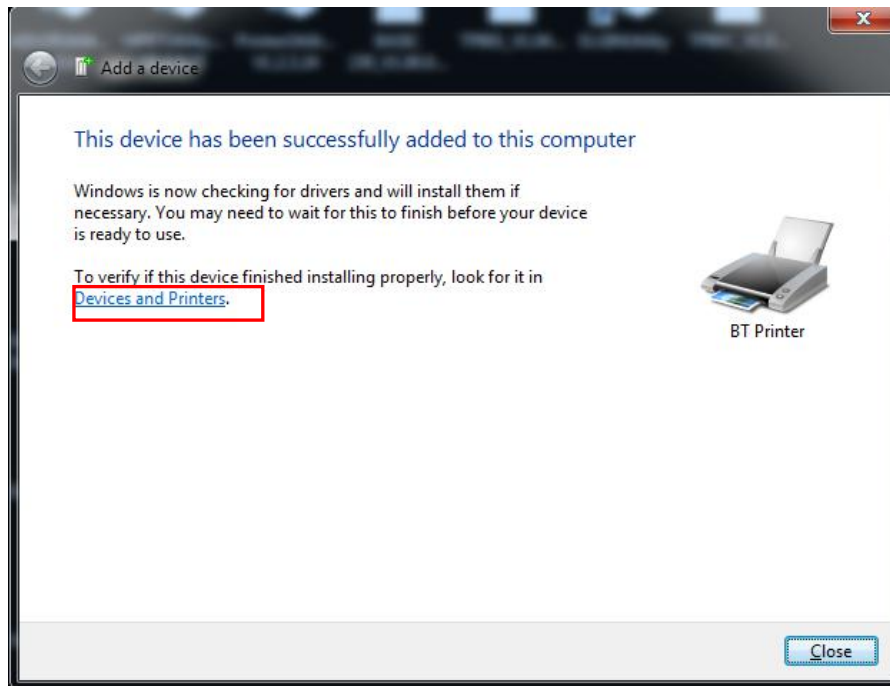


You might need to enter the same passcode into the printer.

Or, try entering a passcode on it.

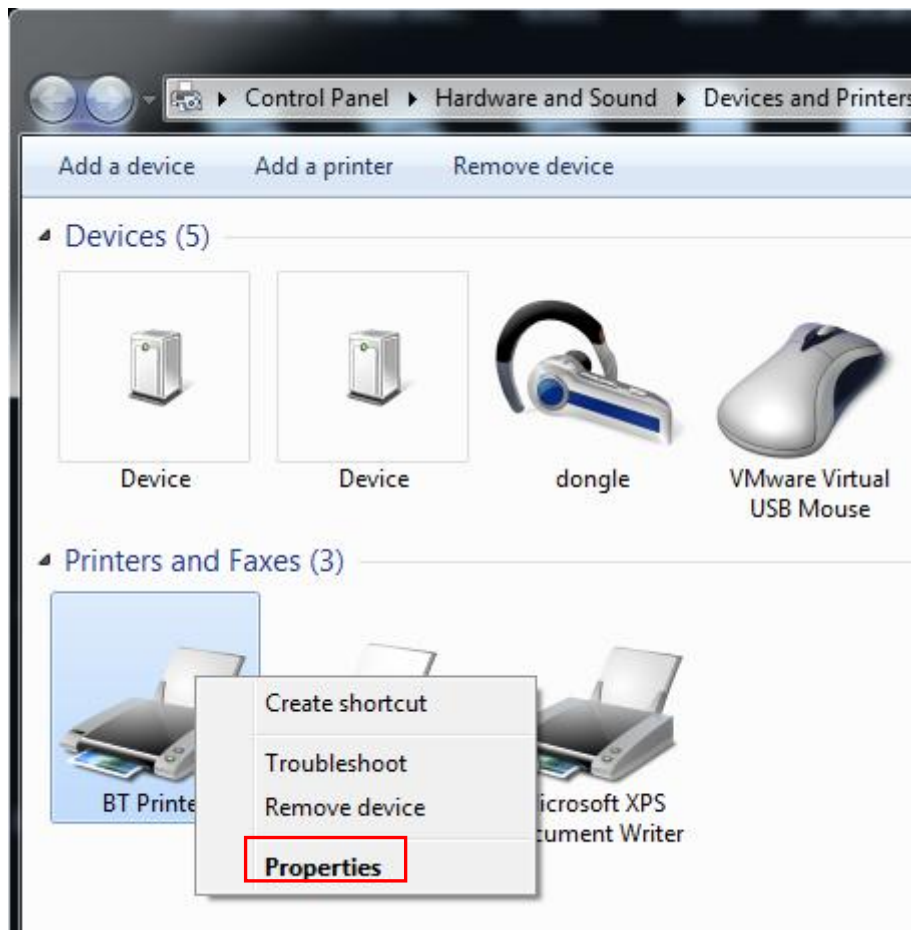
Next
Cancel

5. Click “Devices and Printers”, you can find the corresponding BT Printer icon.

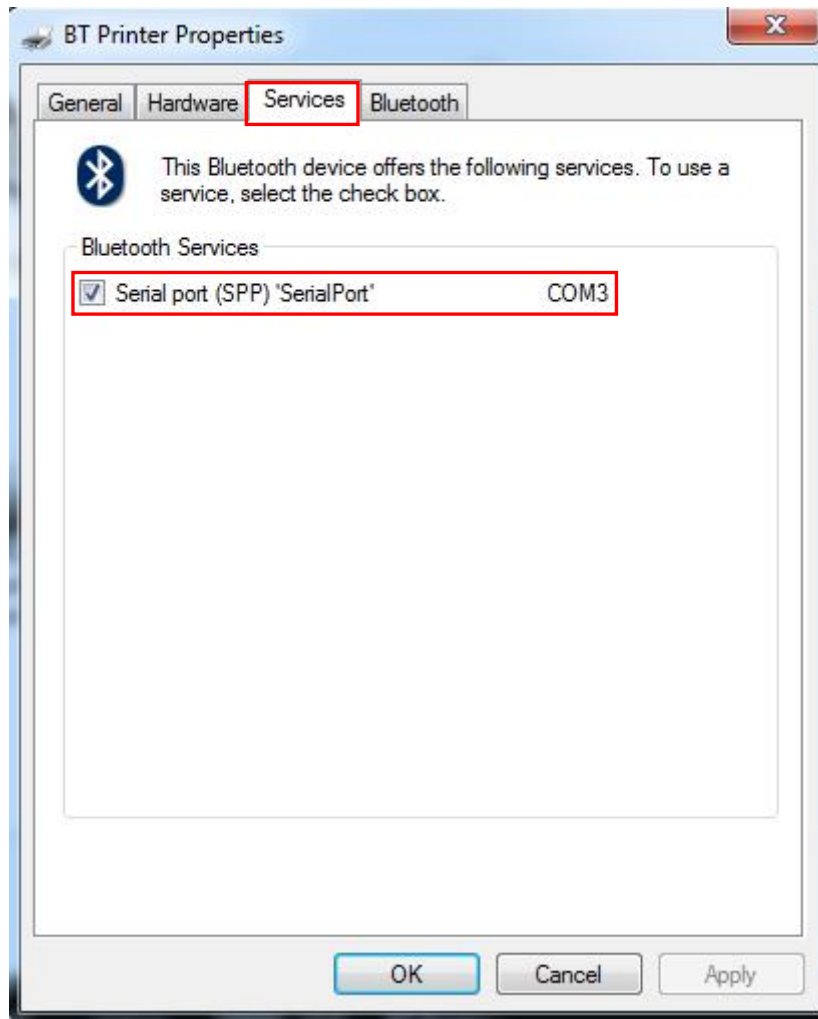




6. Right click the BT Printer icon, and choose “Properties”.

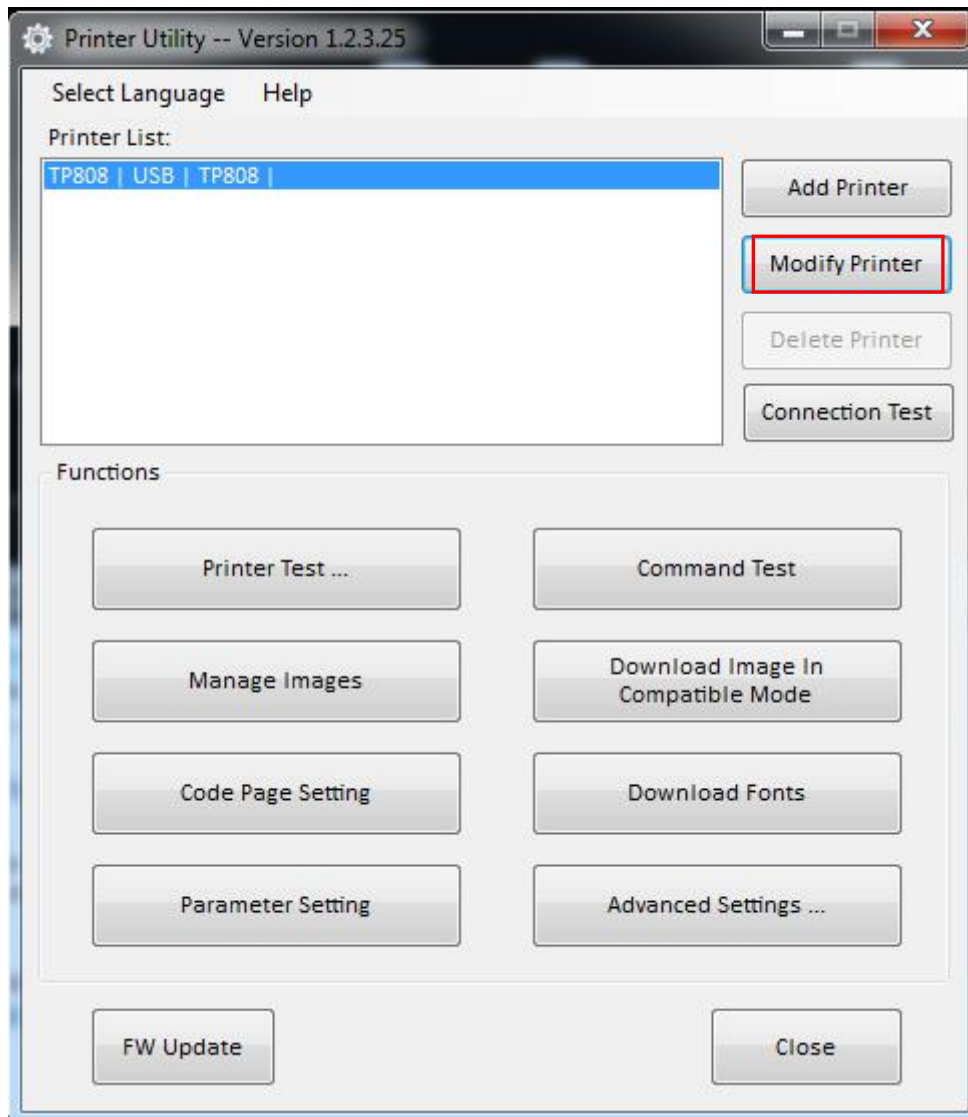


7. In the BT Printer properties, choose "Services", you can find COM3, that is connected to the Bluetooth port.

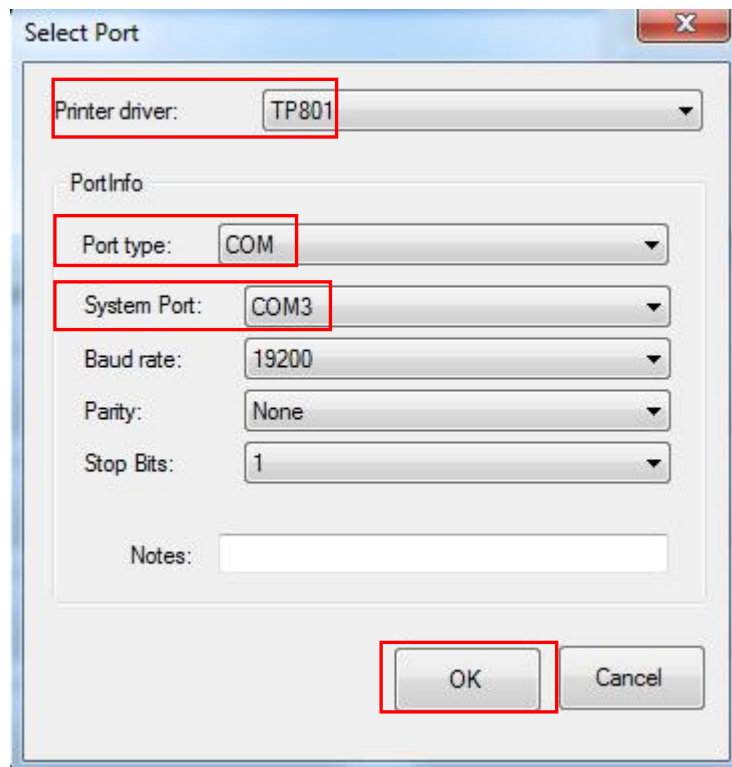


8. Install the Utility Tool on the main device. (Please refer to the Utility Tool Instruction.)

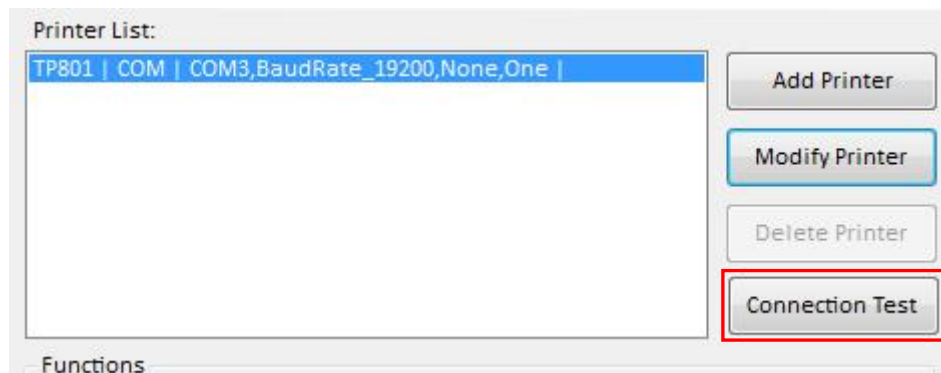
9. Open the printer utility, and click “Modify Printer”.



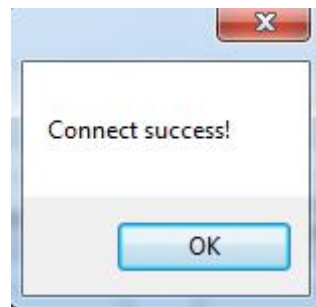
10. Choose the “Printer driver”, for example, “TP801”; Choose “COM” for “Port type”; select the same port “COM3”( refer to “7.” in chapter 5.1 ) for “System Port”, then click “OK”.



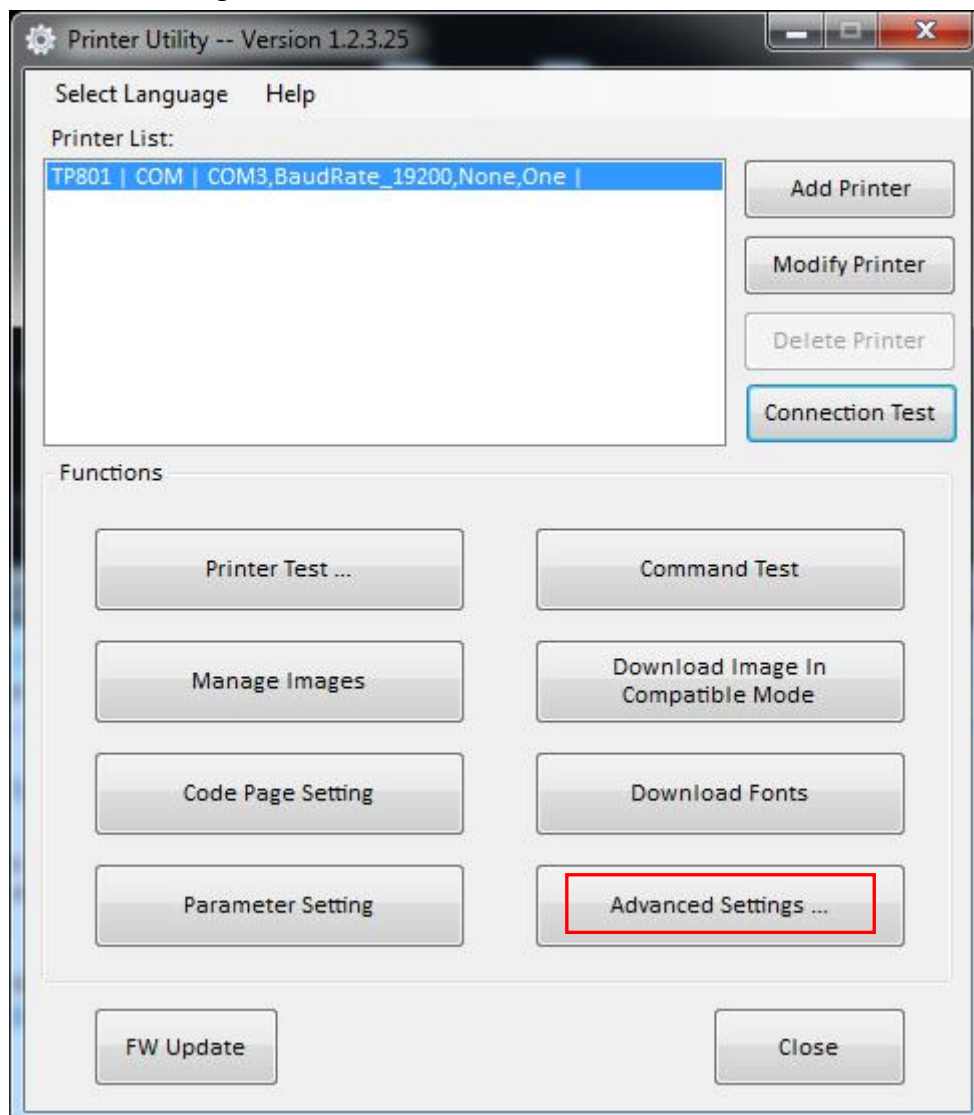
11. Click the “Connection Test”.



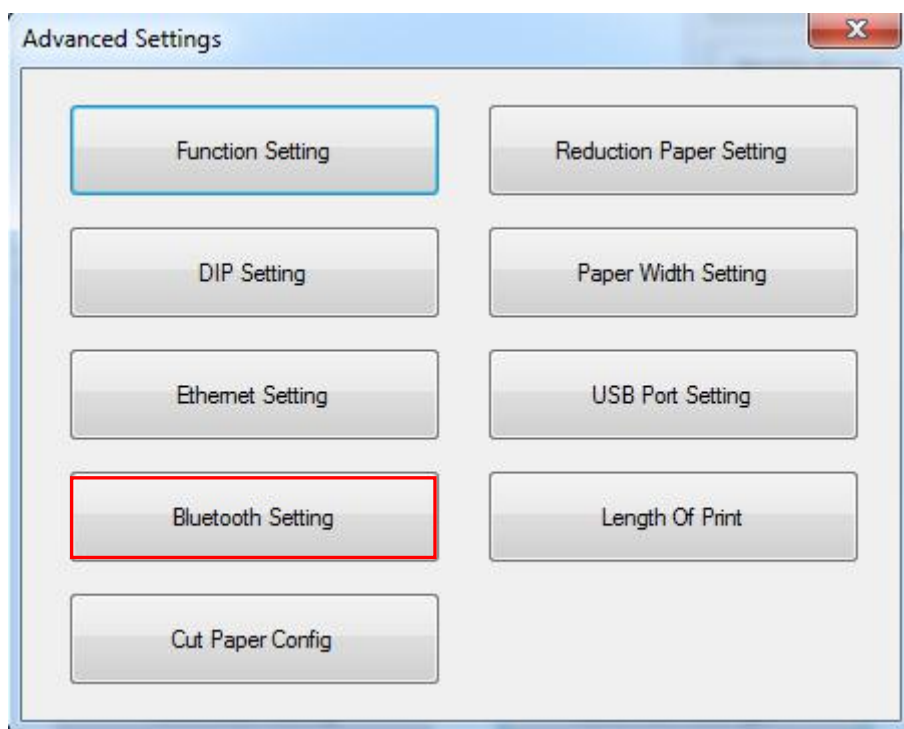
12. The printer is successfully connected through Bluetooth.



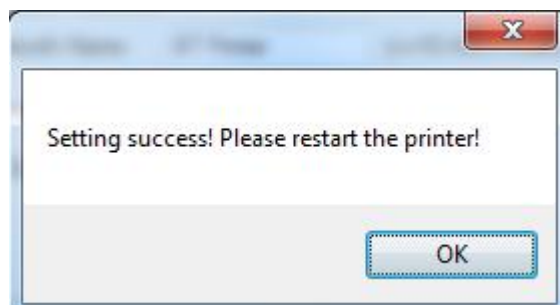
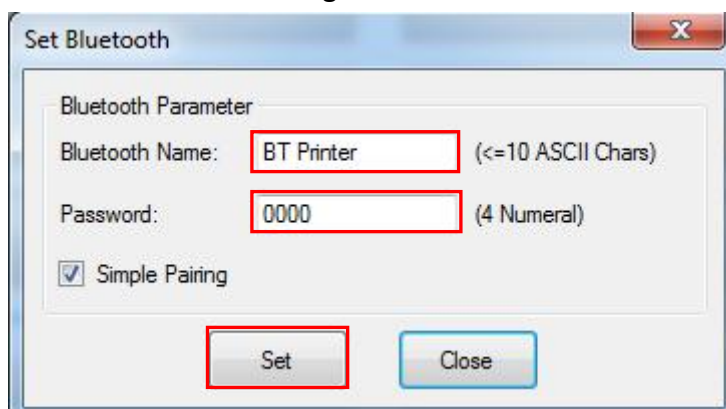
13. Click "Advanced Settings".



14. Click "Bluetooth Setting".



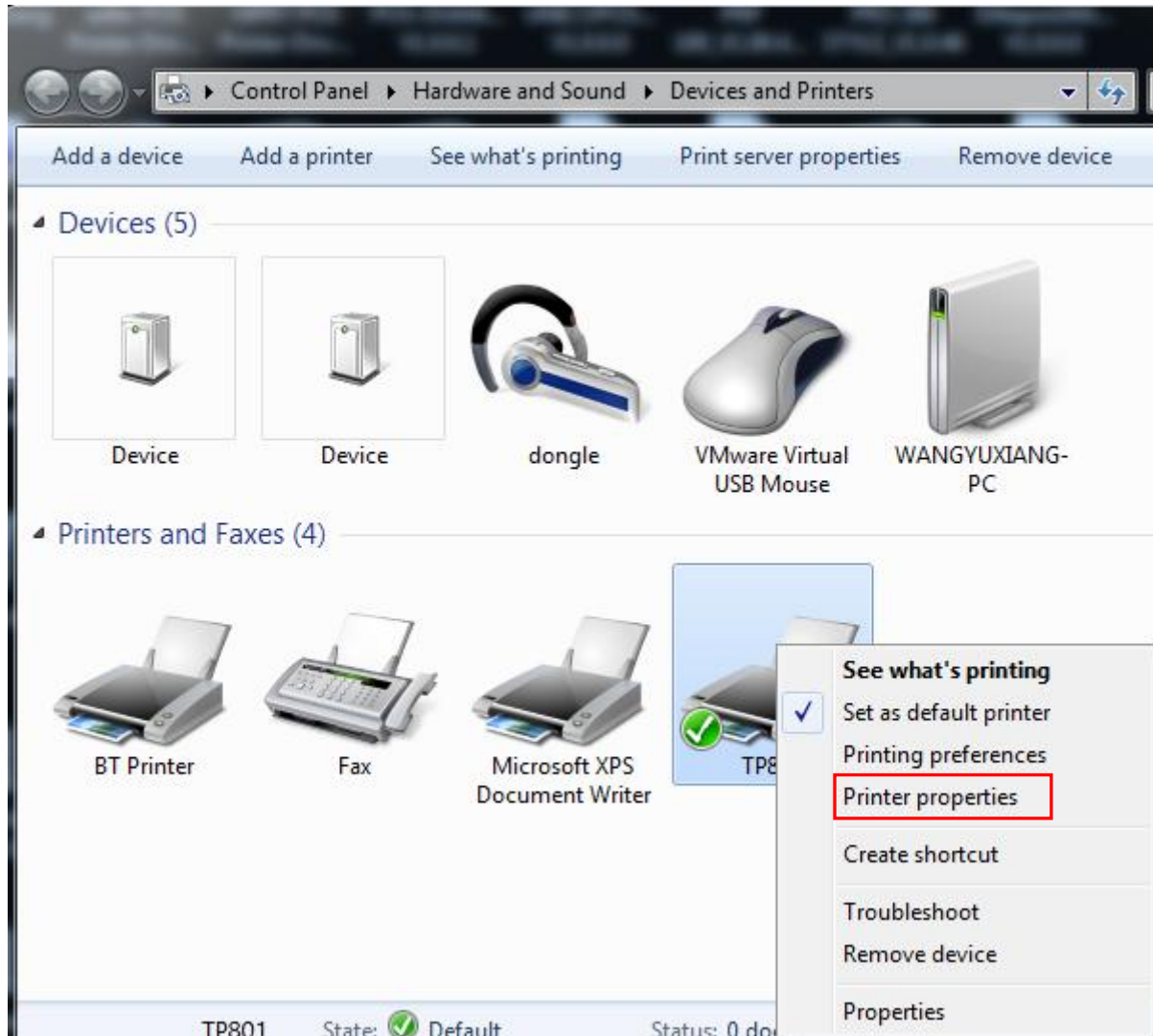
15. User can type a new Bluetooth name and password in the following window, click "set", and restart the printer to take effect of the setting.



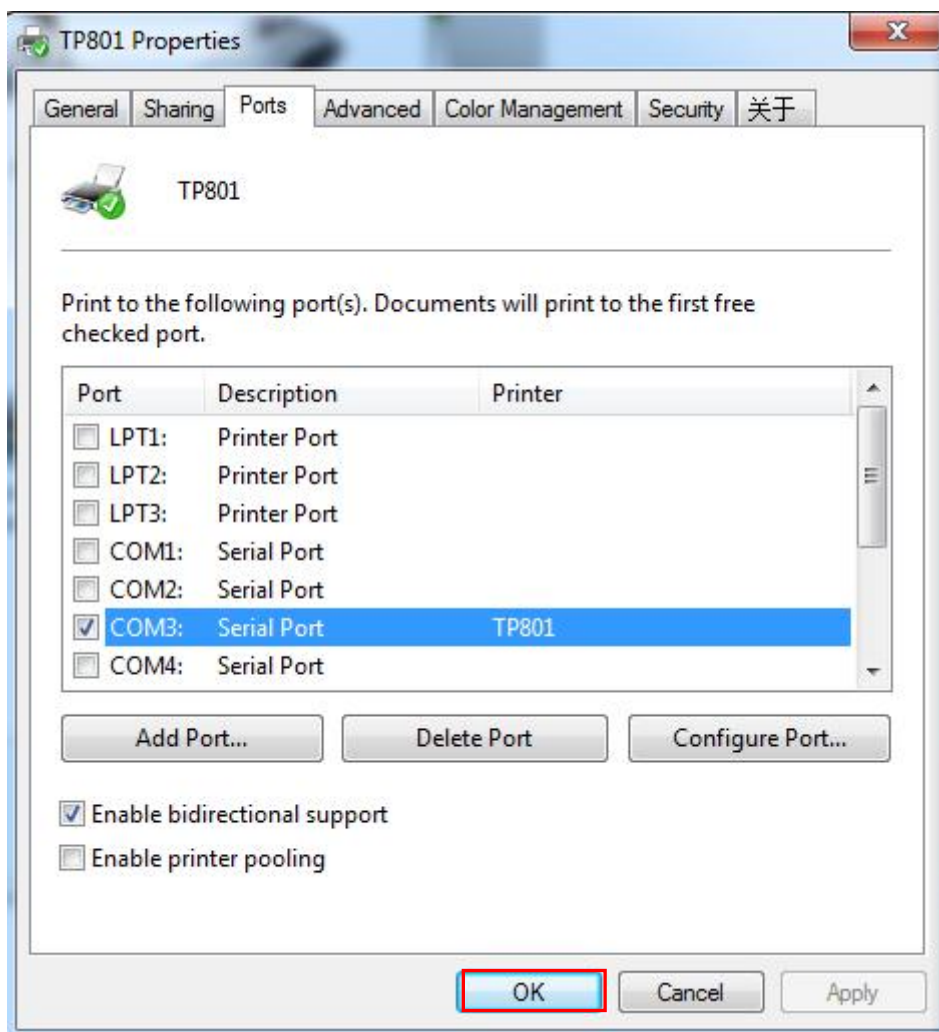
Note: When the "simple pairing" is checked, the printer does not need to enter the Bluetooth password to connect, when the "simple pairing" is not checked, the printer needs to enter a Bluetooth password to connect.

## 5.2 Bluetooth - Windows Driver

1. Take the same steps of “1. ~ 7.” in Chapter 5.1.
2. Install the Windows Driver program. (Please refer to the Windows Driver Manual)
3. Right click the Bluetooth printer icon, and choose “Printer Properties”.



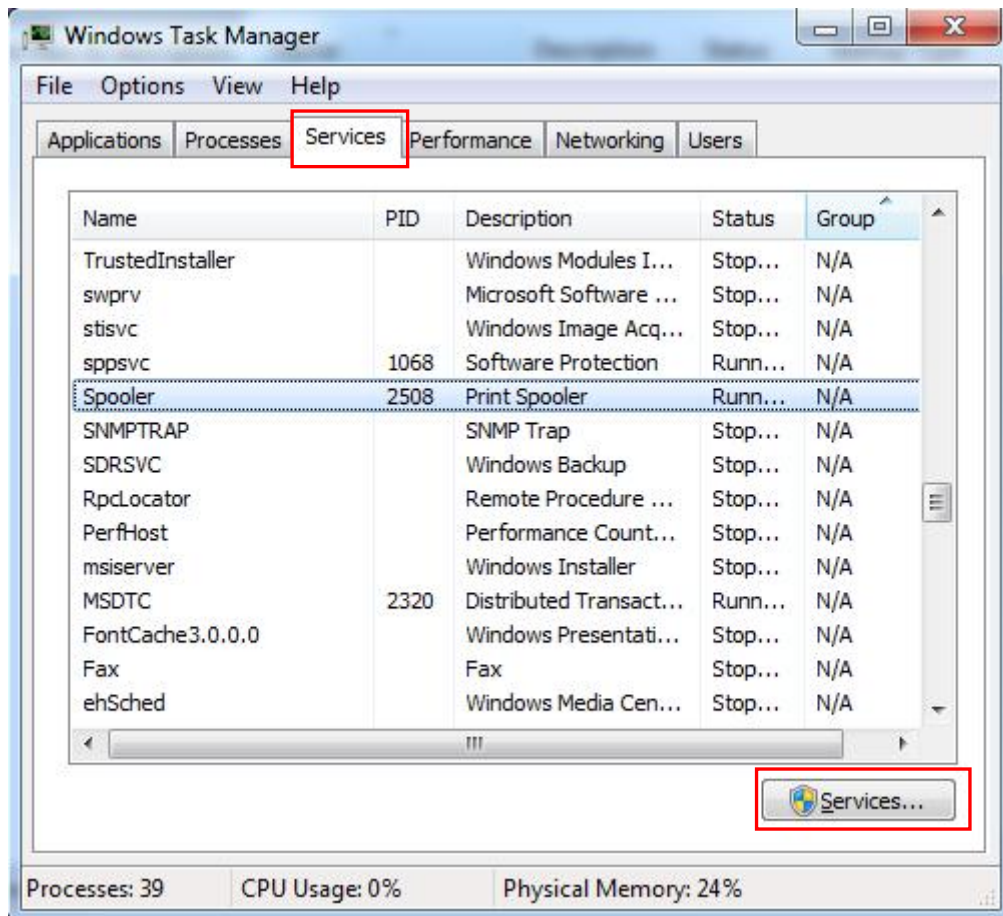
4. In the “Printer properties”, choose “ports”, select the same port COM3 ( refer to “7.” in chapter 5.1 ), then click “OK”.



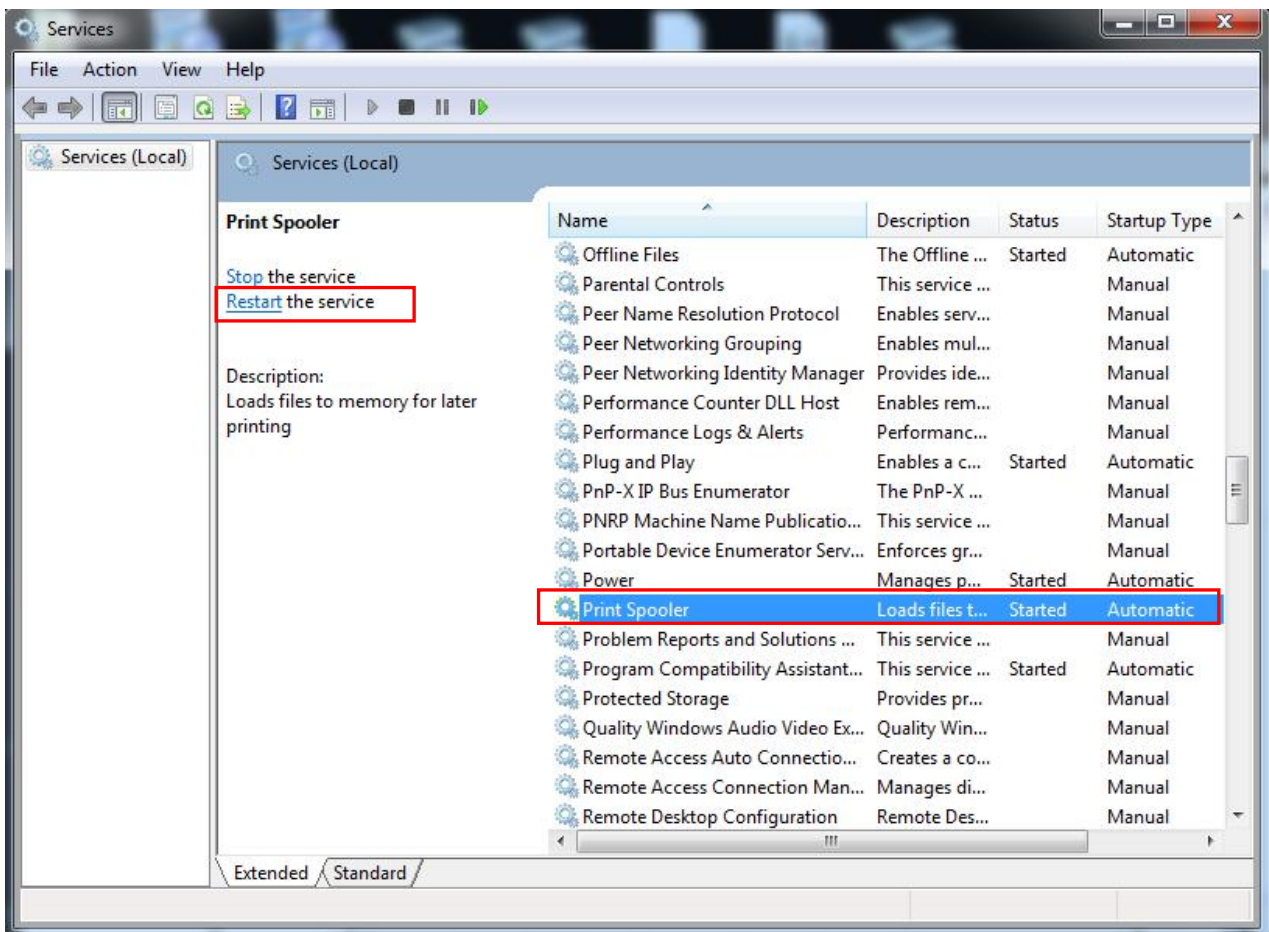
**Note:** If the corresponding port is not found in the list, add the port according to the following steps:



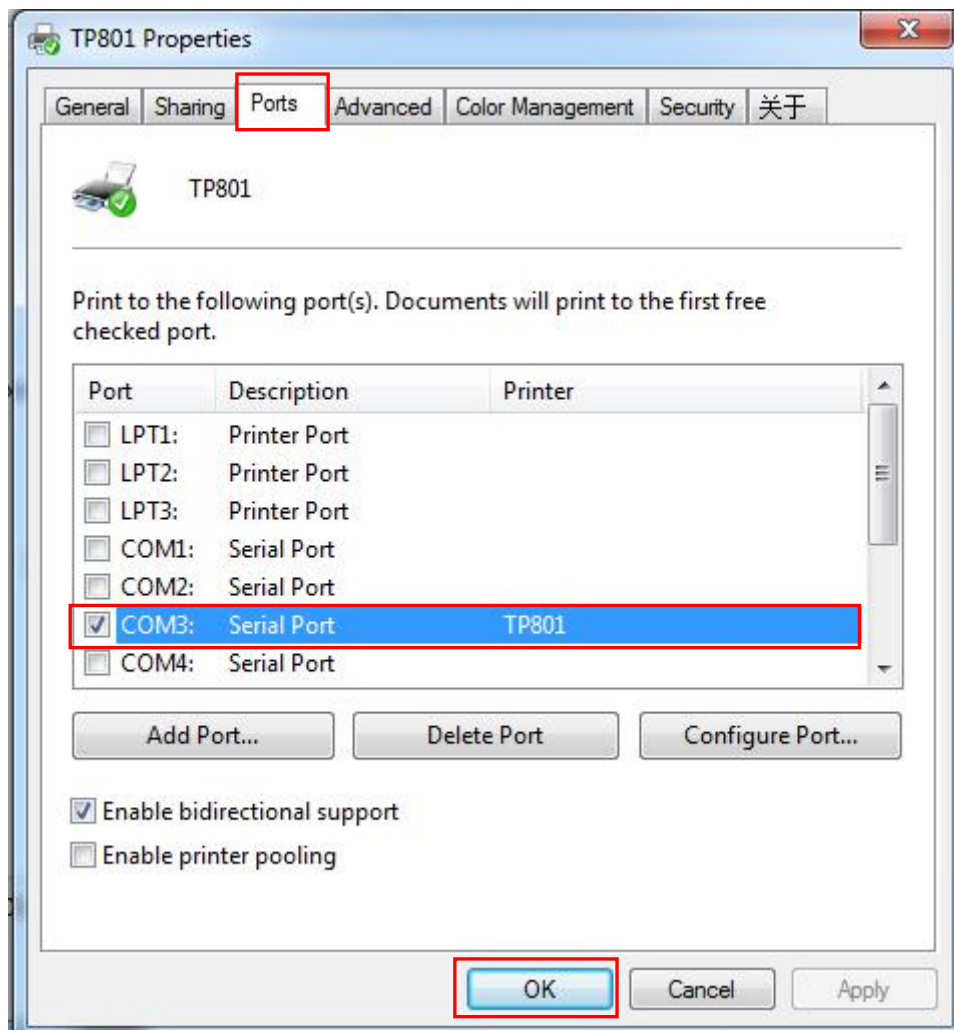
1) Open the Windows Task Manager, click both the “Services” at the upper and lower position of the window.



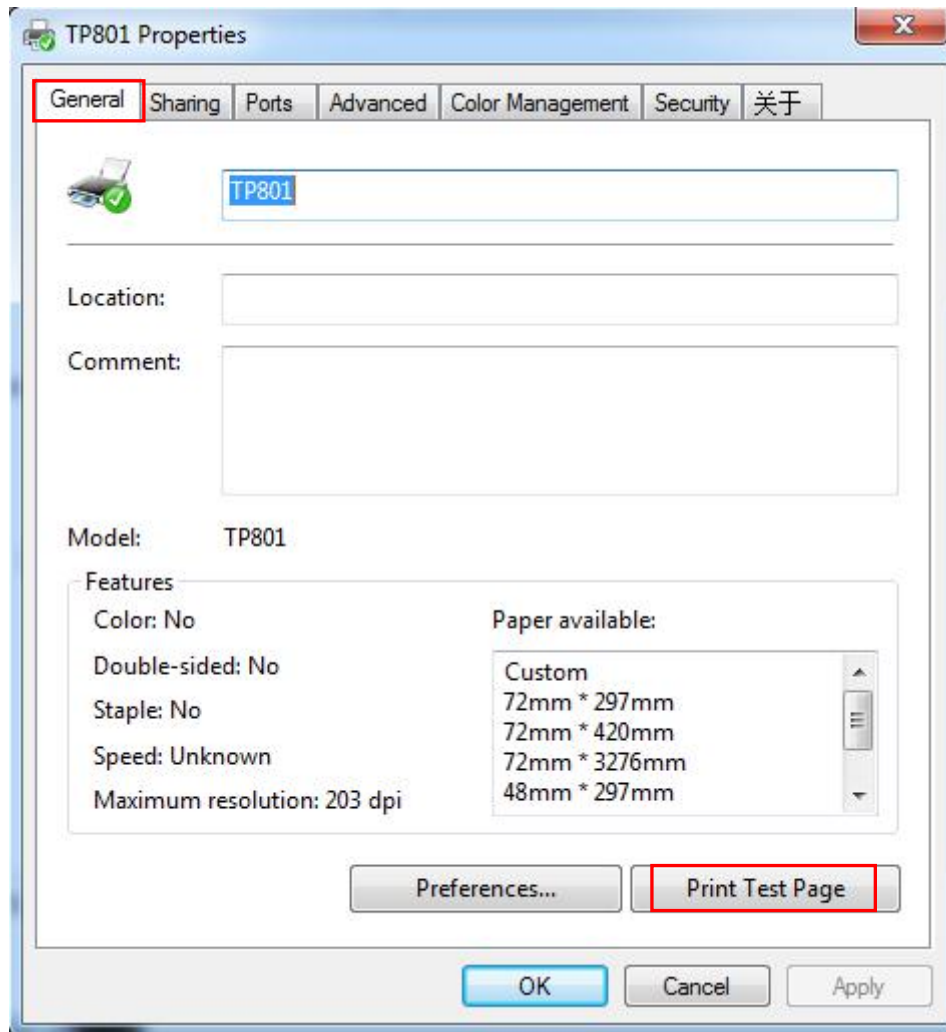
2) Choose "Printer Spooler" in the list, click "Restart the service"



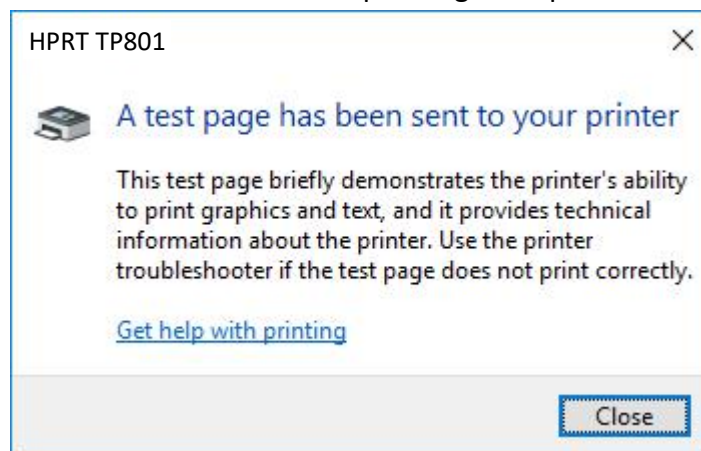
3) Go back to the “Printer Properties”, you can find the “COM3” under “Ports”. Click “OK”, so the port for the BT connection is added.



5. Choose "General", then click "Print Test Page".



6. If the print test page can print normally, the following figure is displayed; if fails, check whether Bluetooth is disconnected or the corresponding COM port is occupied.

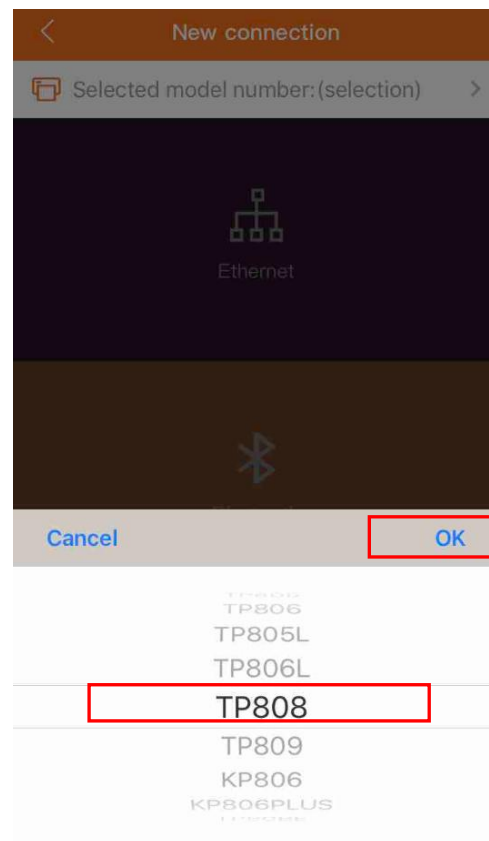
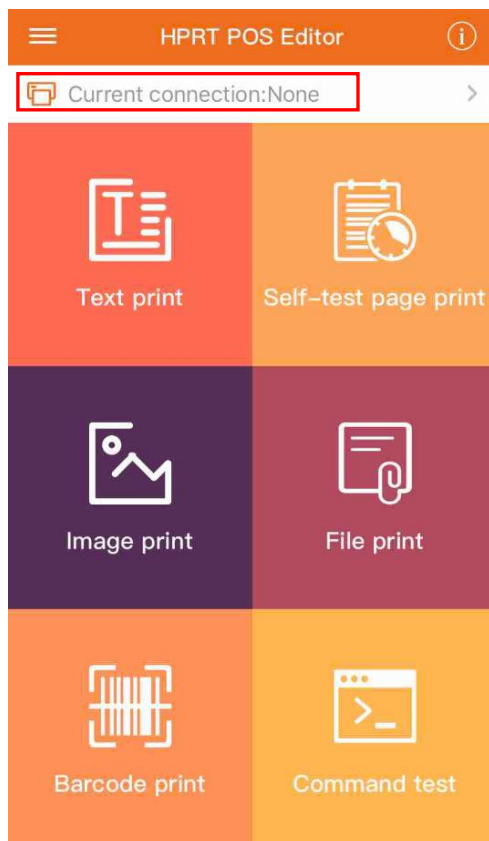


## 5.3 Bluetooth - App

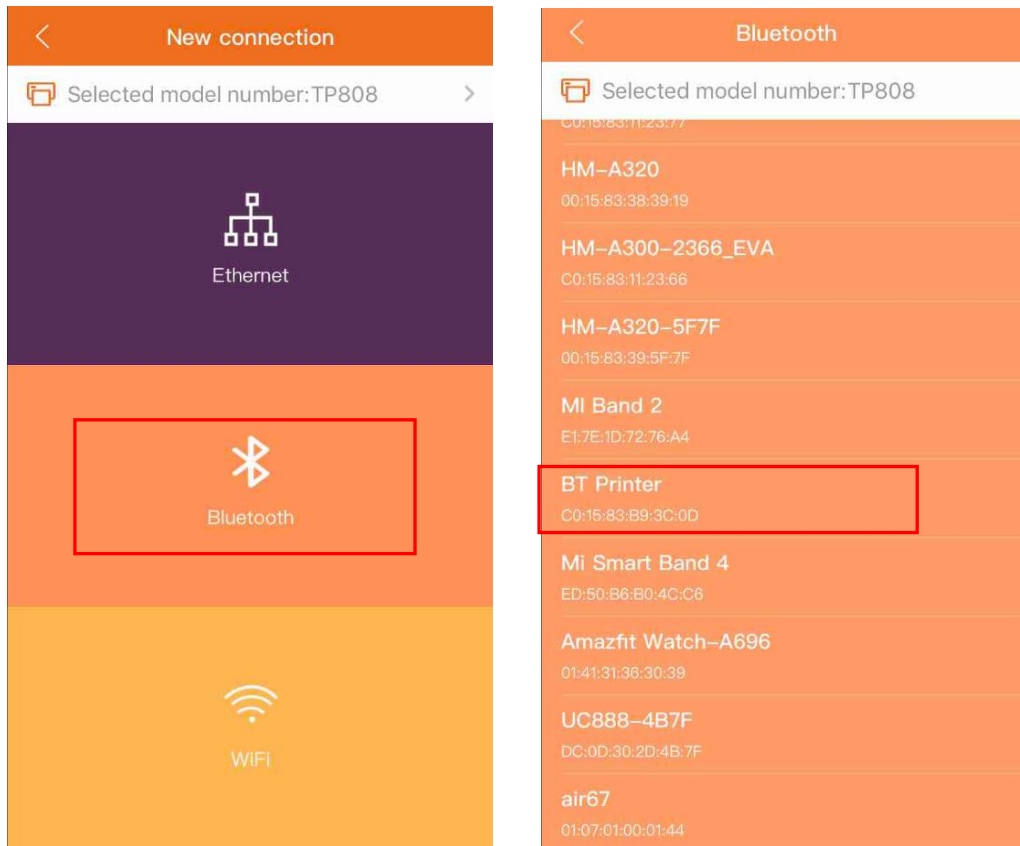
1. Download "POS Editor" from "App Store" of iOS mobile phone. ( For Android mobile phone, download it from this link: <https://fir.im/yacu>)
2. Click "POS Editor" icon on desktop of mobile phone.



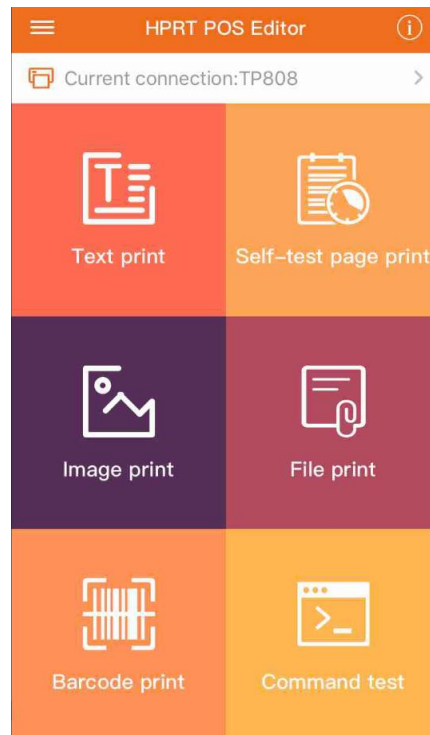
3. Turn on the printer with BT function.
4. Click "Current connection" and choose printer module that you want to connect with, click "OK".




5. Click “Bluetooth” and choose the printer module (“BT Printer”, as shown in the following screenshot) which has the same Bluetooth ID as the one shown on the self-test page of printer.

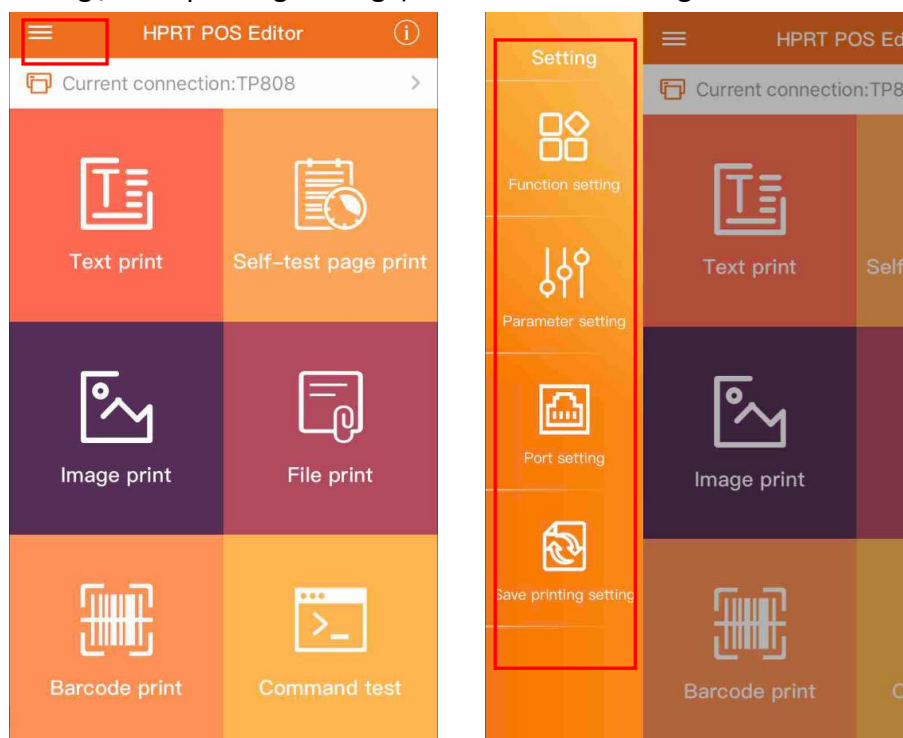


6. When the mobile phone is connected successfully with the printer via Bluetooth, it shows the interface as the following screenshot.



“Text print / Self-test page print / Image print / File print / Barcode print / Command test” are available for usage.

7. Click “” on the up left corner, and the following settings (“Function setting/Parameter setting/ port setting / Save printing Setting”) are available for usage.





8. Click “Port setting”, choose “Bluetooth”, and the Bluetooth parameters can be set.

